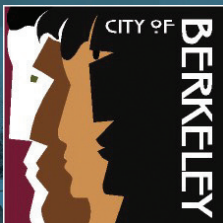
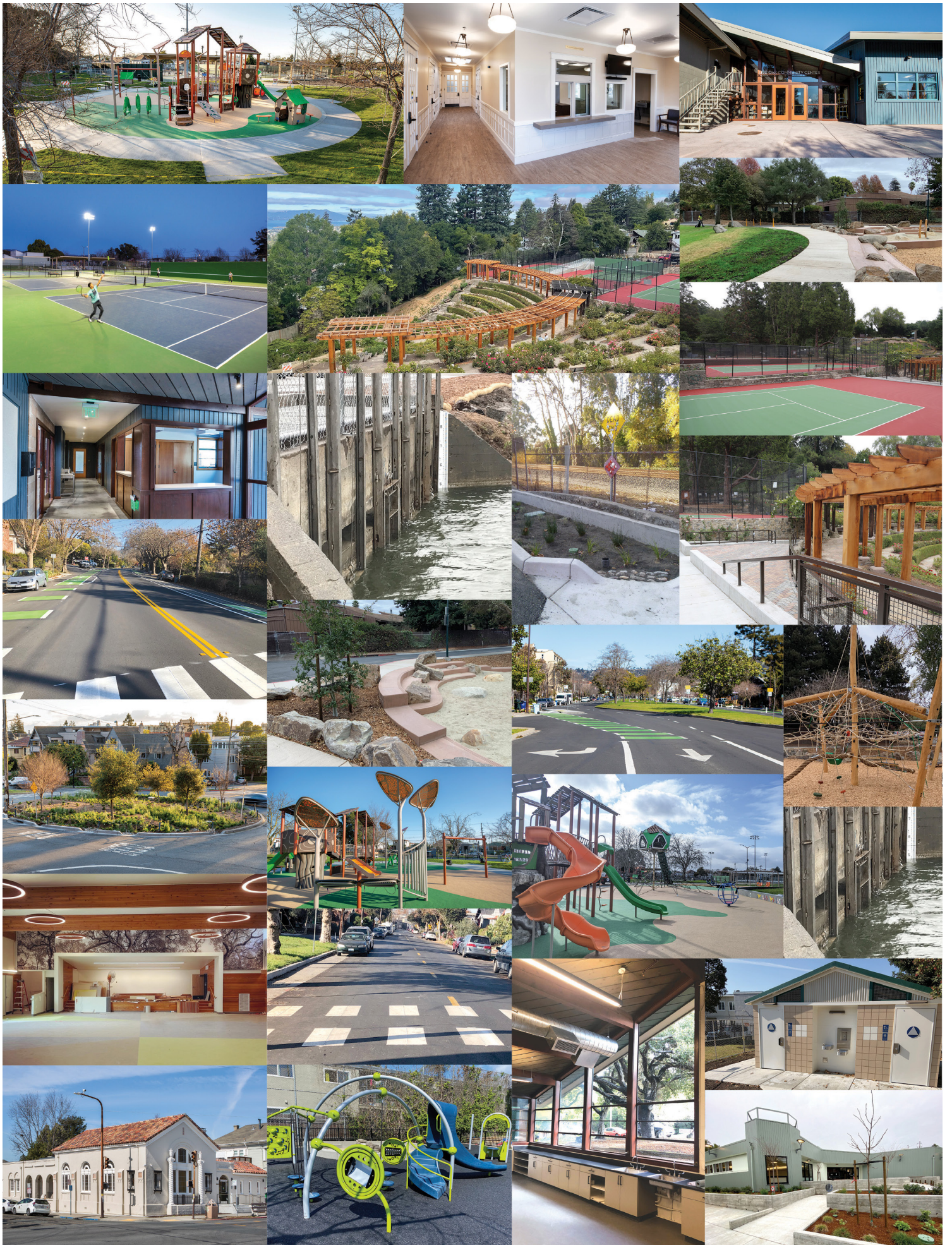


MEASURE T1 UPDATE

Your 2016 Infrastructure
Bond at Work



www.cityofberkeley.info/MeasureT1



Message from the City Manager

Dear Berkeley Residents,

With the passage of \$100M Measure T1 in 2016, an amazing 86.5% of Berkeley residents told us they wanted to fix and upgrade our failing infrastructure and so far, we have successfully done just that. During Phase 1 (2017-2022), \$40M was spent on 39 different projects, leveraging an additional \$23M from grants and special funds to deliver a significant \$63M in infrastructure improvements. T1 Phase 1 projects made many of our community buildings seismically safe and accessible, repaved some of the most neglected streets in the city, built green infrastructure, replaced outdated and non-compliant play structures, increased our City's resilience by reducing water consumption, brought new life to an aging Rose Garden, made our diverse tennis community happy with 9 renovated courts and cleaned out the tide tubes in Aquatic Park for greatly improved water quality in the lagoon. Additionally, we did a fair amount of conceptual planning that included the San Pablo Park Community Center and a new pool, Willard Clubhouse, citywide restrooms, and the community space and restrooms at the Tom Bates Sports Complex.

This informational guide highlights T1 Phase 1 projects with photos and descriptions on pages 5-13. Additionally, it lists the numerous projects that have been completed since 2016 without T1 funding on pages 14-15. As you will see, we have been very busy repairing and enhancing City of Berkeley infrastructure for the benefit of the entire community. Despite this success, T1 has provided less than 10% of the funds needed to fix the City's failing infrastructure as we still have over \$1.2 billion in unfunded infrastructure needs, including facilities, parks, streets, storm drains, sewers and the waterfront.

As we finish up the last 2 projects from Phase 1, the Marina Streets and North Berkeley Senior Center, and start on the ambitious \$60M Phase 2, focused on South Berkeley buildings and citywide restrooms, I want to thank the Mayor, City Council, all the amazing Parks and Waterfront and Public Works Commissioners, and staff who have brought these projects to fruition. Most of all, I want to sincerely appreciate Berkeley residents who overwhelmingly voted for Measure T1 in 2016.

Dee Williams-Ridley



What is T1?

Phase 1 projects leveraged an additional \$23M in grant and special funds expenditures.

The 2016 \$100M T1 Infrastructure Bond Measure authorized the City to sell General Obligation Bonds to repair, renovate, replace or reconstruct the City's aging infrastructure, including sidewalks, streets, storm drains, parks, community centers and other important City facilities. As of this year, City staff will have completed all 39 Phase 1 projects totaling approximately \$40M. Phase 1 projects leveraged an additional \$23M in grant and special funds expenditures. Phase 2 projects, which will spend the remaining \$60M, have been identified, approved and will be completed by 2026.



Codornices Creek Restoration Skyview

T1 Bond Measure Management

The T1 management team meets bi-weekly to review T1 expenditures, project progress, personnel and prepare detailed reports for Council, Commissions and the community. A Policies and Procedures Manual was developed to provide clear and concise guidelines on the management of T1 funds. T1 expenditures are audited every 2 years in order to verify that funding is being spent correctly. Both the manual and audit are available on the website. T1 expenditures can only include direct project costs and during the first 4 years, the team was able to minimize project management, supplies and services expenses, so that only 11% of bond funding was spent on these costs. Typical municipal bond costs for these expenses are much higher.

Public Process

In December 2016, staff produced an initial \$32M list of potential projects for Phase 1. This list was used as a starting point while staff and the Lead Commissions, Parks and Waterfront and Public Works, held over 20 community meetings from January to April of 2017. In June 2017, City staff and the Lead Commissions submitted a joint report to the City Council with recommendations for a \$35M list of projects. On June 27, 2017, the City Council adopted final recommendations for the implementation of Phase 1 per Resolution 68,076. For Phase 2, staff and the Commissions engaged in a much larger public process. This process consisted of over 45 community meetings to determine the next list of projects. This list was approved by the City Council on December 15, 2020, Resolution 69,657.

How to Follow T1 Progress

A full description of T1 projects, public process, program updates, project budgets, reports, audits, manuals, and project maps can be found on our website at www.cityofberkeley.info/MeasureT1. If you're interested in receiving regular T1 updates, email T1@cityofberkeley.info.

Phase 1 Projects (2017-2022)

Buildings - Facilities Improvements
Adult Mental Health Services Center
Frances Albrier Community Center & Pool (P)
Live Oak Community Center
North Berkeley Senior Center
Old City Hall, Veterans Building & Civic Center Park (P)
Restroom - Citywide Needs Assessment (P)
Strawberry Creek Park Restroom
Tom Bates Complex - Restroom, Community Space (P)
Willard Park Clubhouse/Restroom (P)
Citywide Safety Improvements
Berkeley Health Clinic - Electrical (P)
Corporation Yard - Roof & Electrical
Marina Corp Yard - Electrical
Public Safety Bldg - Mechanical & HVAC (P)
Park Improvements
Aquatic Park Tide Tubes Clean Out - Phase 1A
Berkeley Municipal Pier Study (P)
George Florence Park 2-5, 5-12 Play Areas
Irrigation - Citywide Controller Systems
Rose Garden Pergola & Pathways
Rose Garden Tennis Courts
San Pablo Park 2-5, 5-12 Play Areas

Park Improvements
San Pablo Park Tennis Courts
Strawberry Creek Park 2-12 Play Areas
Tom Bates Complex - Artificial Turf
Green Infrastructure Projects
Channing Way near RR Tracks
Codornices Creek at Kains Avenue
Dwight Way near RR Tracks
Grayson Street near RR Tracks
Page Street near RR Tracks
Piedmont Avenue Median
Piedmont Avenue Traffic Circle
Ward Street
Street Rehabilitation
2nd Street - Delaware to Addison (P)
Adeline Street - Derby to Ashby
Euclid Street at Rose Garden
Hearst Street - Milvia to Henry
Monterey Avenue - Alameda to Hopkins
University Ave, Marina Blvd, Spinnaker Way
Ward Street - San Pablo to Acton
West Street - Allston to End

Phase 2 Projects (2021-2026)

Buildings - Facilities Improvements
1947 Center Improvements
African American Holistic Resource Center
Cazadero Camp Dining Hall
Cesar Chavez Park Restroom
Channing Garage Restroom
Corporation Yard (Main) Improvements
Emergency Solar Batteries
Fire Station 2 Improvements
Fire Station 6 Improvements
Harrison Park Restroom
Marina - K Dock Restroom
MLK Jr. Youth Services Center
Ohlone Park Restroom
Restrooms (3) in ROW
South Berkeley Senior Center
Tom Bates Complex - Restroom, Community Space (D, C)
Willard Park Clubhouse/Restroom (D, C)

Park & Pathway Improvements
Aquatic Park Tide Tube Clean Out - Phase 1B
Civic Center Park - Fountain Turtle Garden
Grove Park 2-5, 5-12 Play Areas
Grove Park Field Improvements
John Hinkel Park 2-12 Play Area, Picnic, Parking
King Pool Tile & Plaster Replacement
Marina - D & E Dock Replacement
Marina - Piling Replacements
Ohlone Park 2-5, 5-12 Play Areas, Mural Garden
Ohlone Park Lighting
Pathways Improvements
Street, Sidewalks & Storm Drains Improvements
Sidewalk Maintenance/Safety Repairs
Stormwater Infrastructure Various Locations
Street Bollard Conversion to Landscaping
Street Reconstruction of Arterials, Vision Zero, Bus Network, Bike/Ped Plan

(P) Planning Only (D, C) Design & Construction Only

All projects include planning, design and construction unless otherwise noted. Detailed information on Phase 1 and 2 projects could be found at www.cityofberkeley.info/MeasureT1.

Facilities

Adult Mental Health Services Center

Improvements included a seismic retrofit, ADA, solar panels, EV charging stations and a complete remodel of the interior that created more than 20 therapeutic rooms. This center provides mental health and related social services to Berkeley/Albany communities and families.



For award details, visit www.cityofberkeley.info/MeasureT1

Funded by

- Measure T1: \$1,931,000
- Mental Health Services Act: \$2,784,000
- Capital Improvement Fund: \$695,000
- Mental Health State Aid Realignment Fund: \$895,000
- CDBG Fund: \$1,489,000



Live Oak Community Center

Improvements included replacement of outdated building systems, seismic upgrades, expansion of office space, interior upgrades including a renovated kitchen, new bathroom and improvements to the theater. This center is home to a variety of community art and dance classes, afterschool programs, camps and public meetings.



For award details, visit www.cityofberkeley.info/MeasureT1

Funded by

- Measure T1: \$6,392,000
- Parks Tax (Measure F): \$1,086,000
- General Fund: \$1,000



North Berkeley Senior Center

Improvements included seismic upgrades, ADA, complete modernization of the interior, exterior, solar panels, two electric vehicle charging stations and functional art. This center houses a dynamic community offering a variety of activities, classes, services for seniors and public meetings.



Funded by

- Measure T1: \$8,468,000
- Federal Emergency Management Agency (FEMA) grant: \$1,875,000
- General Fund: \$100,000



Streets

Adeline Street Improvements

Adeline Street runs from South Berkeley to Shattuck Avenue and is a main arterial connection to Oakland. This project improved approximately 4,000 linear feet of pavement from Ashby Avenue to Derby Street and included protected bicycle lanes, bus boarding islands and high visibility crosswalks.



Funded by

Includes Hearst Avenue

- Measure T1: \$3,885,000
- Measure BB: \$186,000
- Measure M: \$100,000

Marina Streets Project

This project is replacing and relocating University Avenue, between West Frontage Rd and Marina Blvd, installing a modern roundabout at the University and Marina intersection, replacing Spinnaker Way and renovating Marina Blvd, and significantly improving these streets which serve as a gateway to the Waterfront.



Funded by

- Measure T1: \$2,833,000
- SB1: \$1,000,000
- Measure B LSR: \$398,000
- Measure BB: \$928,000
- Capital Improvement Fund: \$43,000
- Doubletree Contribution: \$3,000,000

Monterey Avenue Project

Monterey Avenue, from Hopkins Street to The Alameda, spans approximately 3,000 linear feet. This project includes improvements to pavement condition, bicycle lanes, curb ramps and sidewalks. The project also includes improvements to two bus stop locations and high visibility crosswalks.

Funded by

Funded together with Ward Street and Bioswales. See page 8.



T1 Street Rehabilitation projects not described or pictured here include Euclid Street (Block in front of Rose Garden), Hearst Street (Milvia to Henry), West Street (Allston to End).

Green Infrastructure

Ward Street Improvements

Ward Street, from San Pablo Avenue to Acton Street, spans over 1,600 linear feet. While this project includes improvements to pavement condition, sidewalks and a high visibility cross walks, the highlight is the green infrastructure improvements in form of pervious concrete gutter along San Pablo Park.



Funded by

Includes Monterey Ave and Bioswales.

- Measure T1: \$3,817,000
- Measure B: \$103,000
- Measure BB: \$59,000



Bioswales

When the Hopkins Street Bioswale was determined to not be feasible because of the proximity of large, established London Plane trees, City Council authorized the addition of the following priority sites identified in the Green Infrastructure Plan in lieu of the Hopkins Street work.

- Page Street between Fourth Street and the RR Tracks
- Channing Way at the RR Tracks
- Dwight Way between Fourth Street and the RR Tracks
- Grayson Street near the RR Tracks
- Piedmont Avenue Median between Durant Avenue and Channing Way
- Piedmont Avenue Traffic Circle

Funded by

Funded together with Ward Street and Monterey Avenue.



Parks

Berkeley Rose Garden Pergola, Pathway & Tennis Courts

With 1,500 rose bushes and views of the San Francisco Bay, the Berkeley Rose Garden is a popular attraction for all. This project combined two T1 Phase 1 projects. It included the reconstruction of the historic redwood pergola and trellis, accessibility improvements to provide an accessible path of travel to the center of the pergola, renovation of tennis courts, pathway improvements, new irrigation system and retaining wall repairs.

Funded by

- Measure T1: \$2,832,000
- Parks Tax (Measure F): \$1,221,000
- Capital Improvement Fund: \$595,000



For award details, visit www.cityofberkeley.info/MeasureT1

Tom Bates Sports Complex Synthetic Turf Replacement

This project replaced the existing worn out artificial turf with a safer more durable system, added a concussion pad and natural in-fill material that replaced the recycled rubber pellets. These fields are considered to be the most highly used fields in Northern California serving approximately 19,000 participants annually.

Funded by

- Measure T1: \$312,000
- Parks Tax (Measure F): \$1,000
- Gilman Reserve Fund: \$1,148,000 (User Fees and contributions from the cities of Albany, Berkeley, El Cerrito, Emeryville, and Richmond)



Aquatic Park Tide Tube Cleanout

The Central Tide Tubes (5) Maintenance Sediment Removal project was completed in the fall of 2020. It restored the existing operating capacity of the tide tubes by cleaning out the accumulated sediment and conducting an inspection and assessment of the tide tubes and slide gate. The project included dredging, tide tube sediment removal and gate replacement.

Funded by

- Measure T1: \$438,000
- Parks Tax (Measure F): \$375,000



Parks

San Pablo Park Playground & Tennis Courts

This project combined two Phase 1 projects. The park features picnic areas, baseball/softball fields, basketball courts, tennis courts, and play areas for ages 2-5 and 5-12. This project included replacement of both playgrounds, resurfacing of the tennis courts, new fencing, new bleachers, shade structures, new drinking fountains as well as accessibility improvements.

Funded by

- Measure T1: \$1,215,000
- Parks Tax (Measure F): \$1,296,000
- Capital Improvement Fund: \$38,000
- General Fund: \$20,000



Strawberry Creek Park Play Area & Restroom Improvements

Phase 1, funded by Parks Tax, included resurfacing of the volleyball, tennis, and soccer courts, new fencing, and accessibility improvements. Phase 2 renovations, primarily funded by T1, included replacement of the restroom, 2-12 playground and other site improvements.

Funded by

- Measure T1: \$834,000
- Parks Tax (Measure F): \$145,000
- Capital Improvement Fund: \$96,000



George Florence Park

George Florence Park features play areas, a multi-purpose lawn and a picnic area for community members to enjoy. This project included renovation of the age 2-5 and age 5-12 play areas, a pollinator garden and accessibility improvements.

Funded by

- Measure T1: \$606,000
- Parks Tax (Measure F): \$1,000



Parks, Creeks & Corporation Yards

Citywide Irrigation System

There are approximately 90 irrigation controllers throughout Berkeley that help maintain our parks, fields and medians. The new computer-based irrigation system will help staff effectively manage irrigation systems by conserving water and controlling costs.

Funded by

Measure T1: \$529,000



Codornices Creek Restoration Project

This project restored a critical segment of Codornices Creek between Kains and San Pablo Avenues by stabilizing eroding creek banks and removing failing concrete creek banks. The project's bio-engineered creek banks provide habitat for the benefit of steelhead and other wildlife. The project includes a new trash rack to prevent debris from clogging the culvert underneath San Pablo Avenue.

Funded by

- Measure T1: \$24,000
- Measure M: \$206,000
- State Transportation Tax: \$302,000
- Prop 84 Department of Water Resources: \$495,000

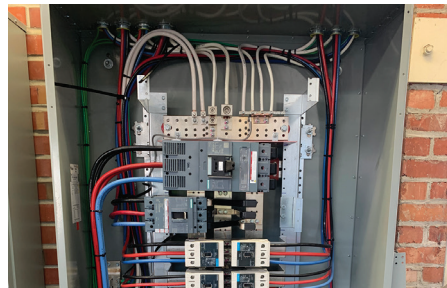


Main & Marina Corporation Yards

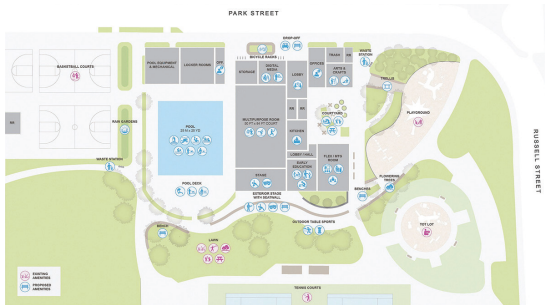
The Corporation Yard (1326 Allston Way) improvements included upgrades to the electrical system and the replacement of the emergency generator. The Marina Corporation Yard improvements included replacement of structural beams and a much-needed upgrade to its electrical distribution system.

Funded by

Measure T1: \$1,150,000



Planning Studies



Frances Albrier Community Center & Pool

This project completed a conceptual design for the replacement of the Frances Albrier Community Center to a Care and Shelter facility and the addition of a 25 meter pool. The conceptual plans will also be used to seek other funding opportunities.

Funded by

Measure T1: \$247,000

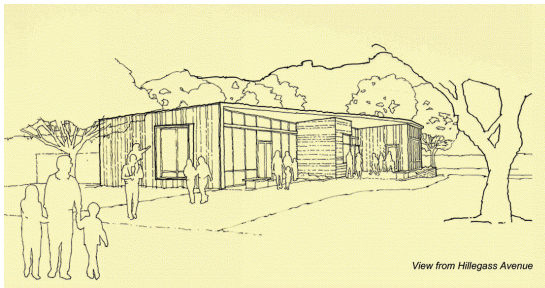


Tom Bates Regional Sports Complex Restroom & Community Space Facility

The Tom Bates Regional Sports Complex is considered to be the most highly used fields in the region serving over 19,000 youth and adults annually. This project finalized a conceptual design of a restroom, meeting room and a storage area. With the completion of the space planning phase, the remaining funds were allocated to extend the sewer line as part of the ACTC's Gilman Street at I-80 Interchange Project.

Funded by

Measure T1: \$305,000

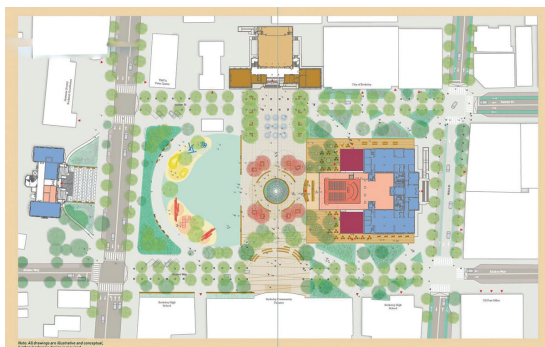


Willard Clubhouse Replacement

Located inside Willard Park, the Willard Clubhouse is a small 565 SF one-story, one-room clubhouse that has long been a staple of Berkeley's afterschool and summer day camp programs. This project involved a conceptual planning process for a replacement clubhouse and restroom.

Funded by

Measure T1: \$170,000



Berkeley's Civic Center Area

This project produced conceptual design options for the merging of Old City Hall, Veterans Building and Civic Center Park into a city center. An extensive public process involved feedback from hundreds of residents and business owners. Funding produced a historic resources report of both Old City Hall and Veteran's Building and a historic landscape report for Civic Center Park. The project will result in a plan for infrastructure and amenities that support current and future community needs while respecting and celebrating the area's rich past and historically significant structures.

Funded by

Measure T1: \$376,000

Planning Studies

Municipal Pier Structural Assessment & Large Scale Ferry Feasibility Study

In July of 2015, the Berkeley Municipal Pier was closed to the public due to significant structural problems that rendered the Pier unsafe. This project consisted of a structural condition assessment of the existing pier. Additionally, the Water Emergency Transportation Authority (WETA) and the City Council jointly fund a planning study to evaluate the feasibility of a dual-purpose pier for a large scale ferry and recreation activities.

Funded by

- Measure T1: \$205,000
- WETA: \$250,000
- Marina Fund: \$236,000



Ann Chandler Public Health Center

The Ann Chandler Public Health Center serves thousands of diverse community members each year providing low-cost or free health services. The electrical wiring and conduits have passed their useful life and are in need of upgrading. This project included an assessment of the center to determine electrical upgrades needed.

Funded by

Measure T1: \$7,000



Public Safety Building

The Ronald T. Tsukamoto Public Safety Building is the headquarters for the City of Berkeley's Fire and Police Departments. The building also includes a detention center, the City's Public Safety Communications Center, staff locker rooms, gym and a shooting range. This project included a feasibility and cost assessment to install back-up cooling units for the IT server room.

Funded by

Measure T1: \$5,000



Citywide Restroom Assessment

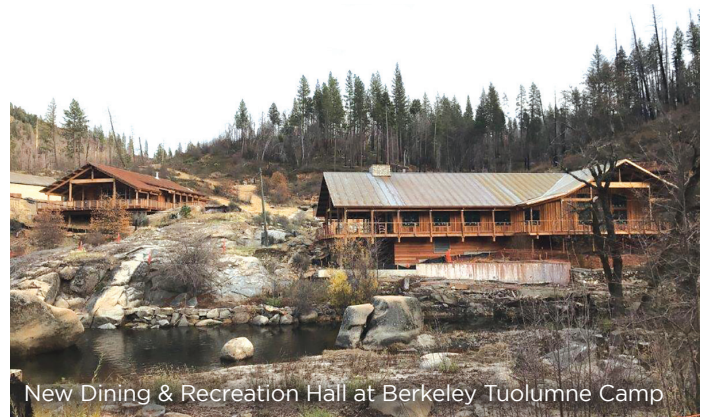
The project performed an evaluation of existing public restrooms, a community input process, and research into ecologically friendly restrooms with the goal of providing recommended locations, types and conceptual designs for upgrades of existing and new public restroom solutions in Berkeley.

Funded by

Measure T1: \$149,000

Other Projects Funded or Completed Since 2016

Funded - In Process
Aquatic Park Parking & Boat Access Area (Parks Tax)
Bike Park (Design only) (General Fund)
Camps - Cazadero Jensen Dormitory Replacement (Insurance)
Camps - Echo Lake ADA Phase 1 (General Fund)
Camps - Berkeley Tuolumne Rebuild (Insurance, FEMA, Catastrophic Reserve Fund)
Cedar Rose Park 2-5, 5-12 Play Structures (Design only) (General Fund)
Glendale La Loma 2-5, 5-12 Play Structures & ADA (Design only) (General Fund)
Addison Street Bicycle Boulevard (Transportation Fund)
Central Library Interior Renovations (Library Fund)
Central Library Stucco Replacement (Library Fund)
Channing Way Green Infrastructure (Storm Fund)
Drainage Improvements Various Locations (Storm Fund)
Dwight/California Intersection Improvements (Transportation Fund)
EV Charging Stations Corp Yard (General Fund)
Fire Station 3 Roof Replacement (General Fund)
Glendale Retaining Wall (Transportation Fund)
Hopkins Corridor Improvements (Transportation Fund)
James Kenney Skate Spot (Design only) (General Fund)
Milvia Street Bikeway Improvements (Transportation Fund)
Pickleball Courts (Design only) (Parks Tax)
Sacramento Complete Streets (Transportation Fund)
Sanitary Sewer Master Plan (Sewer Fund)
Sewer Rehabilitation Citywide - 4.3 miles (Sewer Fund)
Southside Complete Streets (Transportation Fund)
Street Rehabilitation Citywide - 2.6 miles (Transportation Fund)
Waterfront - Berkeley Marina Area Specific Plan (General Fund)
Waterfront - Marina Harbor Main Channel Dredging (Design only) (General Fund)
West Campus Pool Filter Replacement (General Fund)
West Campus Pool Tile & Plaster Replacement (General Fund)



New Dining & Recreation Hall at Berkeley Tuolumne Camp

2021
Drainage Improvements at Various Locations (Storm Fund)
Green Infrastructure at Codornices Creek at Kains (Storm Fund)
James Kenney 2-5, 5-12 Play & Picnic Areas (Grant, Parks Tax)
King Park 2-5, 5-12 Play Areas (Parks Tax, Insurance)
Ninth Street Pathway (Transportation Fund)
Santa Fe ROW (Conceptual Plan only) (Parks Tax)
Sewer Rehabilitation Citywide - 4.4 miles (Sewer Fund)
Shattuck Reconfiguration (Transportation Fund)
Sidewalk Repairs Citywide - 141 shaves, 154 repairs (General Fund)
Street Rehabilitation 11 Citywide Segments - 2.6 miles (Transportation Fund)
Waterfront - Bike Lockers (20) (Grants, Marina, General Fund)
Waterfront - Finger Dock Replacement Phase 3 (Marina, General Fund)
Waterfront - O & K Electrical Replacement (General Fund)
2020
Green Infrastructure at Woolsey (Storm Fund)
John Hinkel Upper Picnic Area (Grant, Parks Tax, Insurance)
Sewer Rehabilitation Citywide - 4.4 miles (Sewer Fund)
Sidewalk Repairs Citywide - 6000 shaves, 34 repairs (General Fund)
Street Rehabilitation 28 Citywide Segments - 4.8 miles (Transportation Fund)
Waterfront - Dock 0, LM, DE, FGHI Restroom Remodels (General Fund)
Waterfront - Finger Dock Phase 1 & 2 (General Fund, Marina)
Waterfront - South Cove Bay Trail, ADA Gangway & Dock Replacements (3 Grants, Marina)

2019

Camps: Echo Lake Dining Hall Repair, Cultural Resource Protection, Cabin Replacement (*Insurance, Camps Fund*)

Camps: Berkeley Tuolumne Tree Removal, Cultural Resource Protection, Cabin Replacement (*Insurance*)

Harrison Soccer Fields Renovation (*Parks Tax*)

Public Safety Building Upgrades (*General Fund*)

San Pablo Restroom Building Renovation (*Parks Tax*)

Sewer Rehabilitation Citywide - 2.9 miles (*Sewer Fund*)

Sidewalk Repairs Citywide - 263 repairs (*General Fund*)

Strawberry Creek Park - Court Replacement (*Grant, Parks Tax*)

Street Rehabilitation 21 Citywide Segments - 3.4 miles (*Transportation Fund*)

Waterfront: Rip Rap Replacement - Eastern Shore Stabilization (*General Fund*)

2018

Bancroft Bikeway/Bus Lane (*Transportation Fund*)

Camps: Cazadero - Landslide Fix (*Insurance*)

Camps: Echo Lake - Leach Field Replacement (*Camps Fund, Insurance*)

Center Street Garage Reconstruction (*Parking Fund*)

Claremont Creek Culvert Repairs (*Storm Fund*)

Downtown BART Plaza & Transit Area Improvements (*Transportation Fund*)

Drainage Improvements at various locations (*Storm Fund*)

Drill Tower Repair/Improvements at Fire Station #6 (*General Fund*)

Green Infrastructure at Rose/Hopkins (*Storm Fund*)

Grove Park Basketball & Tennis Courts (*WW, Parks Tax*)

Hearst Avenue Complete Streets (*Transportation Fund*)

Hilgard Avenue Debris Rack (*Storm Fund*)

Marin Circle Fountain - Sewer, Equipment Door, Landscaping (*Parks Tax*)

Sewer Rehabilitation Citywide - 5.6 miles (*Sewer Fund*)

Sidewalk Repairs Citywide - 2,183 shaves, 130 repairs (*Transportation Fund*)

Street Rehabilitation 24 Citywide Segments - 3.1 miles (performed in 2019) (*Transportation Fund*)

Waterfront: Bait Shop Siding/Beam Replacement (*Marina*)

Waterfront: Launch Ramp Parking Gate & Barrier (*Marina*)

Waterfront: South Cove East Parking Lot/Restroom (*Grants, Marina*)

West Campus Pool: Boiler Replacement (*General Fund*)

2017

Ann Chandler Building Improvements (*General Fund*)

Bahia Child Care Center: Seismic, Siding & ADA Upgrades (*Grant, Parks Tax*)

Bicycle Parking Installation Citywide (*Transportation Fund*)



New 5-12 play feature at King Park

2017

Camps - Cazadero - Building Demo, Tree Removal, Landslide Stabilization (*Insurance*)

Camps - Echo Lake Cabins, Lodge Deck Repair from 2016-17 Snow Damage (*Insurance*)

James Kenney Center - Siding, Seismic & ADA (*Grants, Parks Tax, General Fund*)

King Pool - Boiler Replacement (*General Fund*)

Parking Meter (Solar) Replacement (*Parking Fund*)

Parking Pay Station (Solar) Replacement (*Parking Fund*)

Rectangular Rapid Flashing Beacon at MLK Jr./Virginia (*General Fund*)

Rose Garden - Pergola, ADA - Phase 1 (*Grant, Parks Tax*)

Sewer Rehabilitation Citywide - 4.2 miles (*Sewer Fund*)

Sidewalk Repairs Citywide - 619 shaves (*Transportation Fund*)

Skate Park: Safety & Technical Upgrades (*Parks Tax*)

Street Rehabilitations 38 Citywide Segments - 10.9 miles (*Transportation Fund*)

Willard Park - 2-5 Play Area & Pathways (*Grant, Parks Tax*)

2016

1947 Center Street Building Renovation (*General Fund*)

Drainage Improvements at Various Locations (*Storm Fund*)

Fulton Bikeway (*Transportation Fund*)

King Pool - Filter Replacements (*General Fund*)

Ohlone Dog Park: Drainage, Small Dog Park (*Grant, Parks Tax*)

Sewer Rehabilitation Citywide - 3.2 miles (*Sewer Fund*)

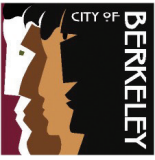
Street Rehabilitations 44 Citywide Segments - 9.7 miles (*Transportation Fund*)

Terrace View: Basketball Courts, Pathways, ADA (*Grant, Parks Tax*)

Virginia-McGee Totland - 2-5 Play Area, Water Feature, Pathways (*Grant, Parks Tax*)

Wildcat Canyon Road Slide Repair (*Transportation Fund*)

Willard - Tennis Court Replacement (*Parks Tax*)



Parks, Recreation & Waterfront Department
 Public Works Department
 2180 Milvia Street, 3rd Floor
 Berkeley, CA 94704

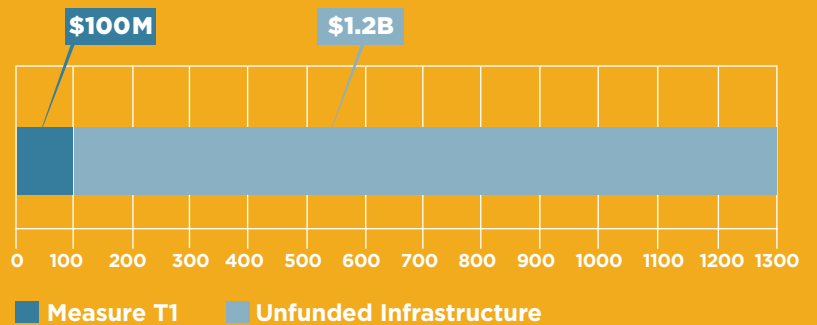
PRSR MKTG
 U.S. POSTAGE
PAID
 Oakland CA
 PERMIT NO. 8214



...AND THERE IS MORE TO BE DONE

\$1.2 BILLION IN CITYWIDE INFRASTRUCTURE NEED

PARKS, WATERFRONT & CAMPS	\$220M
PUBLIC BUILDINGS	\$285M
SIDEWALKS	\$10M
STREETS & ROADS	\$250M
SEWERS	\$175M
STORM WATER	\$245M
TRAFFIC SIGNALS & PARKING	\$15M



Note: These estimates are continuously updated.

For more information on T1 projects and unfunded infrastructure need, please visit
www.cityofberkeley.info/MeasureT1